


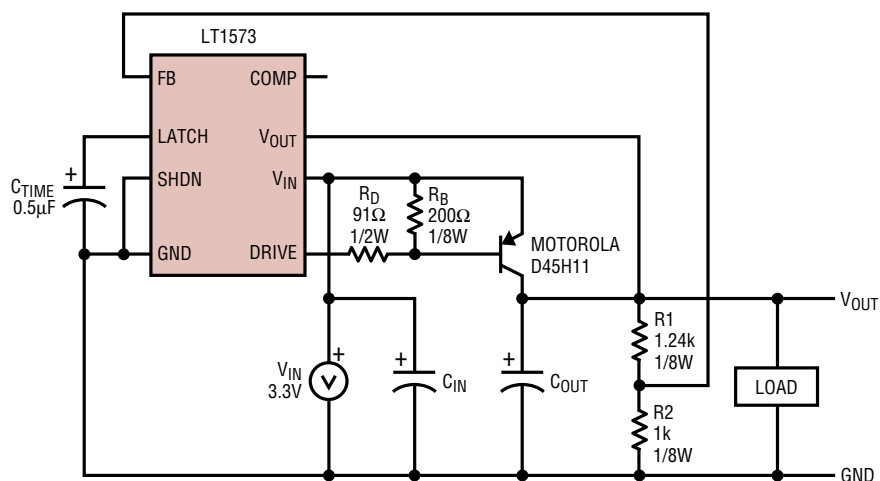
September 1998

The Typical Application titled "3.3V to 2.85V/1A Voltage Regulator" on page 15 of the **LT[®]1573** data sheet is incorrect. The correct diagram is shown below. For complete specifications, typical performance curves and applications information, please see the **LT1573** data sheet.

 LTC and LT are registered trademarks of Linear Technology Corporation.

TYPICAL APPLICATIONS

3.3V to 2.85V/1A Voltage Regulator



C_{IN}, C_{OUT} = AVX 100µF/10V SURFACE MOUNT TANTALUM CAPACITOR
 C_{TIME} = 0.5 µF FOR 100ms TIME OUT AT ROOM TEMPERATURE
 SHDN (ACTIVE HIGH) PIN SHOULD BE TIED TO GROUND IF IT IS NOT USED

1573 TA04

For further information regarding this specification notice contact:

Linear Technology Corporation
 1630 McCarthy Blvd.
 Milpitas, California 95035-7417
 Attn: Product Marketing Manager
 Phone: (408) 432-1900